

TB 7002 - DIESEL ENGINE
TB 7002e - ELECTRIC
BEFARD TRACKED MINI CRANE



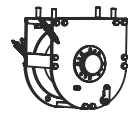
Mini crane on a crawler chassis BEFARD TB 7002 stands out for its agility and mobility. It's very efficient at work, and at the same time durable and reliable.

Despite its compact design and low weight it is characterized by high stability and can lift even heavy loads of large dimensions.

BEFARD TB 7002 designed for indoor and outdoor works.



Hydraulic winch



BEFARD TB 7002 - Diesel engine + 230V or 400V **BEFARD TB 7002e - electric, battery Li-ion**

- maximum load capacity 2500kg
- reach about of 19m with optional equipment
- hydraulic winch max. 990kg
- hydraulic JIB with two extensions
- powered by Diesel engine or Li-ion batteries
- on-grid power 230V or 400V (Li-ion 230V)
- the ability to work and drive (by wire) after connecting on-grid
- the possibility of transporting the crane even on a trailer up to 3.5t GVW
- outrigger mats

EQUIPMENT FOR BASIC VERSION

- radio remote control (both work and drive)
- non-marking tracks
- extendable chassis (78-110cm)
- rotating column - infinite rotation
- two work and driving modes (fast and slow)
- anti-overload system



HYDRAULIC JIB

- the longest hydraulic jib on the market, even 7,0m reach (with optional equipment)

RADIO REMOTE CONTROL

- radio remote control of both driving and crane operation
- included charger for radio remote control with function charging both 12V and 230V

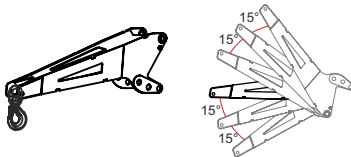


OPTIONAL EQUIPMENT

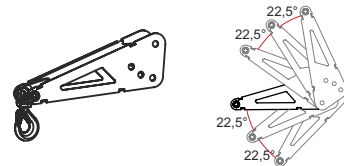
- crane main boom tip (extends the range by approx. 100cm)
- crane last boom tip (extends the range by approx. 50cm)
- manual JIB extension (extends the range by approx. 100cm)
- LED work lamp (powered directly from the machine)
- pulley block
- lowered hook connections



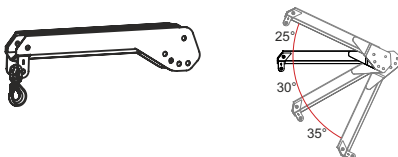
Crane main boom tip



Crane last boom tip



Manual JIB extension



LED work lamp




Regardless of the configuration of additional equipment, TB 7002 is equipped with one hook that can be reattached to additional equipment if necessary

TECHNICAL PARAMETERS:

Maximum load capacity	2500kg
Maximum reach with hydraulic JIB - horizontally ←→	14,30m
Maximum reach with hydraulic JIB and optional equipment - horizontally ←→	15,80m
Maximum reach with hydraulic JIB - vertical ↑↓	17,30m
Maximum reach with hydraulic JIB and optional equipment - vertical ↑↓	18,80m
Winch	990 kg
Winch rope	50m, optional 65m
Radio remote control	work and drive

Weights

Crane basic version	2390kg
Hydraulic JIB	230kg
Power supply 230V	50kg
Winch	60kg
Winch rope and pulley block	depending on options
Outrigger mats	18kg

Power supply	3-cylinder Diesel engine (Made in Japan) + 230V or 400V or Li-ion batteries
Crawler crane drive	gear travel motor, moto-reducer speed 0-2km/h max. degree of inclination 20°
Rotating column	infinite rotation  INFINITY

BEFARD TB 7002e electric - comfort and eco

- fully battery operated (batteries Li-ion)
- bio oil - optionally available for combustion and electric versions
- optional **400V quick charger** (faster Li-ion battery charging)

Standard: during charging on-grid it's possible to work with the device (on wire)

Built-in Li-ion 230V standard battery charger

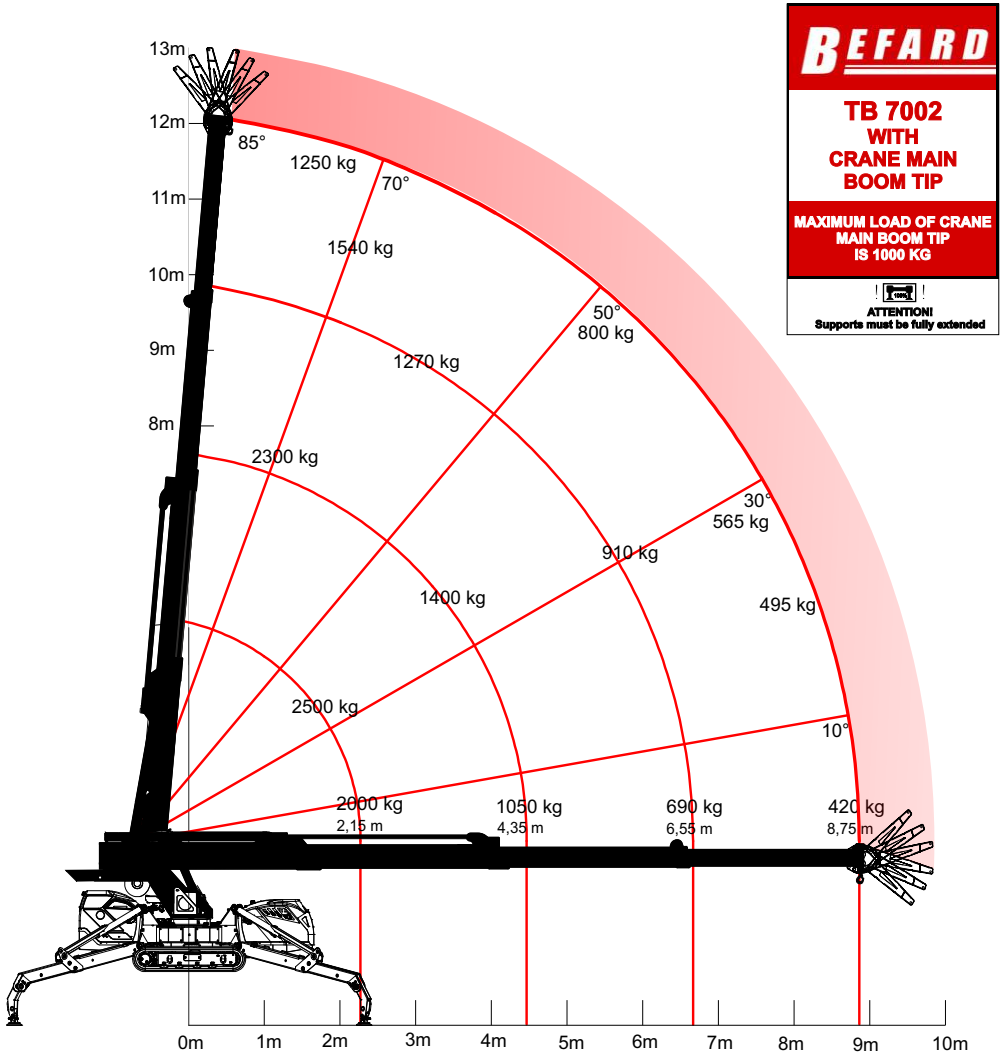


Electric BEFARD machines mean not only the eco, but also the highest comfort of work. Eliminating the combustion engine minimizes machine noise and vibration.

Electric cranes BEFARD provides a unique user experience and precision of work. It also gives you the option of free use of the machine in European city centers where regulations apply Low Emission Zone (e.g. London, Paris, Berlin).

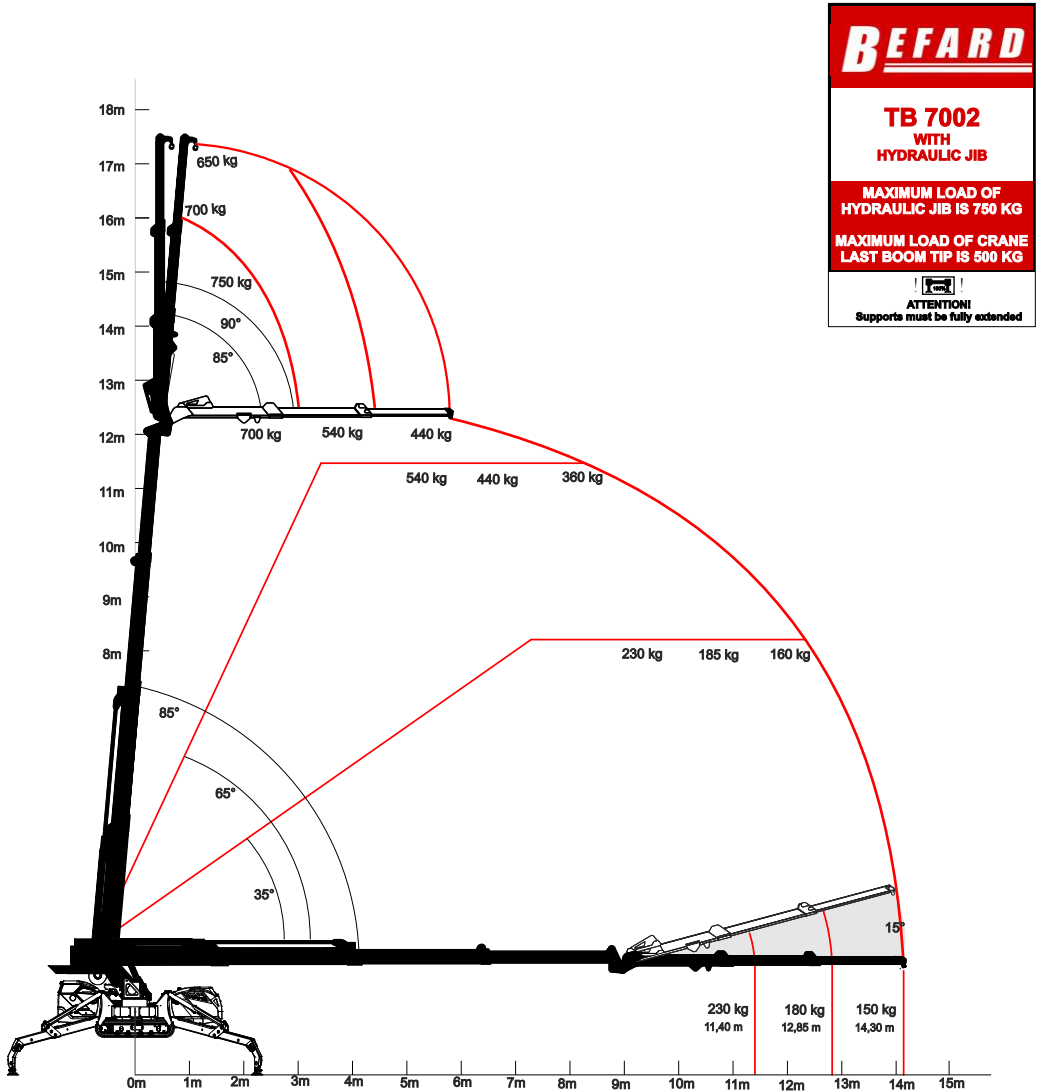


TB 7002 / TB 7002e basic crane version with optional crane main boom tip

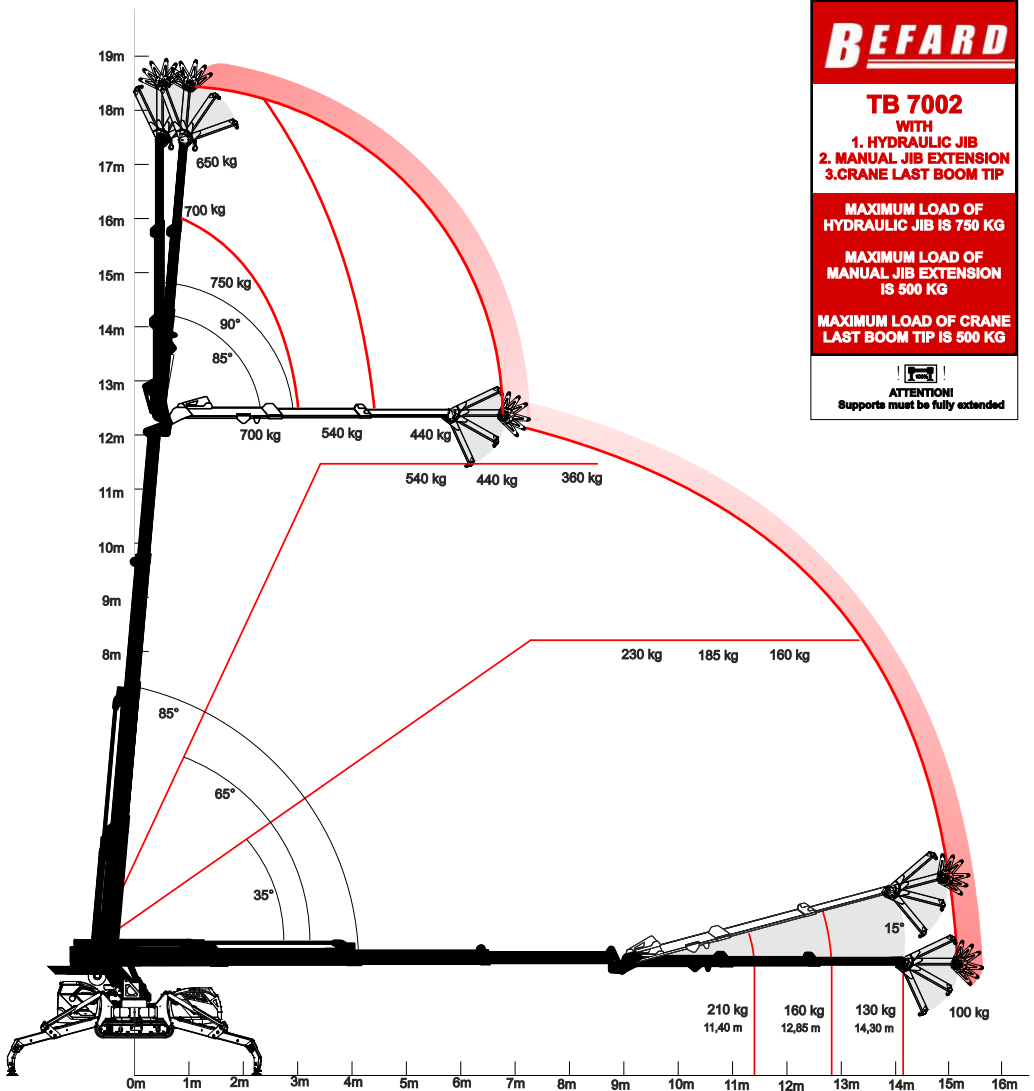


Each crane is supplied with additional load diagrams depending on its equipment.

TB 7002 / TB 7002e standard crane version with hydraulic JIB



TB 7002 / TB 7002e version with hydraulic JIB, manual JIB extension and crane last boom tip



BEFARD

TB 7002
WITH
1. HYDRAULIC JIB
2. MANUAL JIB EXTENSION
3. CRANE LAST BOOM TIP

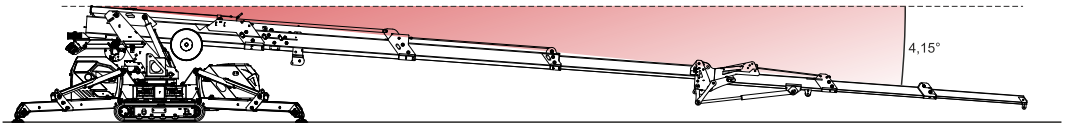
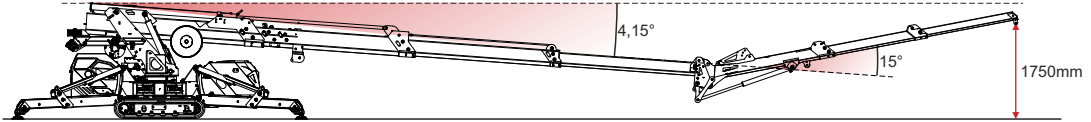
MAXIMUM LOAD OF HYDRAULIC JIB IS 750 KG

MAXIMUM LOAD OF MANUAL JIB EXTENSION IS 500 KG

MAXIMUM LOAD OF CRANE LAST BOOM TIP IS 500 KG

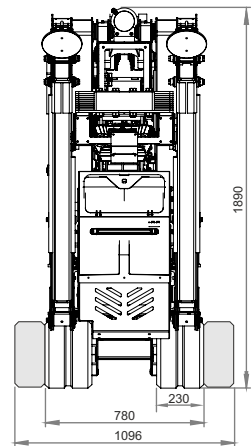
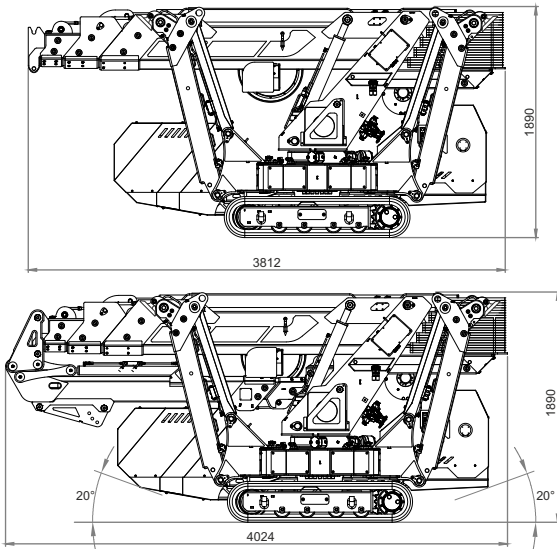
ATTENTION!
Supports must be fully extended

The possibility of lowering the main arm more than 4° below the horizontal



TB 7002 / TB 7002e transport position

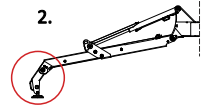
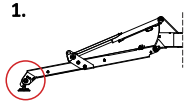
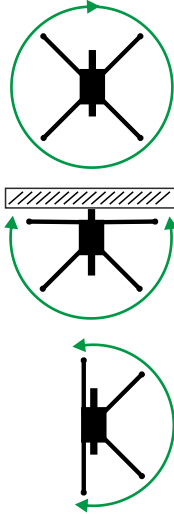
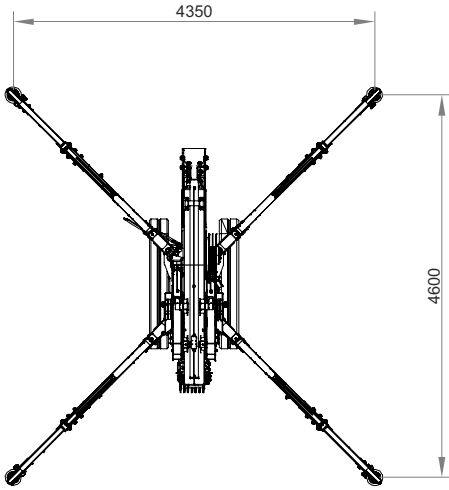
Dimension of folded / unfolded tracks



Supports

Operating range

Position of supports



Device complies to the essential requirements of the directive: 2006/42/EC and 2014/30/EU.

